

# F Series Indoor Fixed IP Camera

## Quick Start Guide



## Welcome

Thank you for purchasing our IP camera!

Before install and use the IP camera, please read the following section carefully.

Please keep this start guide well for future reference.

The following sheet listed the components included in the package. Please contact your local retail if something is missing.

***Please refer to the package list as final.***

Name	Amount	Note
IP camera	1	
Lens	1	Optional
Storage card	1	Storage capacity_
12V power adapter	1	
WIFI antenna	1	Optional
Quick start guide	1	
Software CD	1	
Certificate of quality	1	
Warranty card	1	
Package list	1	

# Table of Contents

- 1 Interface .....4
  - 1.1 Interface ..... 4
  - 1.2 Lens Installation.....7
- 2 Network Installation.....9
  - 2.1 LAN.....9
  - 2.2 Public Network.....9
- 3 Auto Search IP Tool..... 11
- 4 Network Safety Level Setup ..... 13
- 5 Client Operation..... 16
  - 5.1 Network Connection..... 16
  - 5.2 Login and Logout..... 16

# 1 Interface

## 1.1 Interface

Please refer to the following sheet and Figure 1-1 for IP camera interface information.

Interface Name		Connector	Function
VIDEO OUT	Video output port	BNC	Output analog video signal. Can connect to TV monitor to view video.
Wireless Antenna Port			Connect to wireless antenna to receive WIFI wireless signal.
DC 12V			Power port. Input 12V DC
STATUS	Status indication light		It is to indicate camera working status: <ul style="list-style-type: none"><li>● The red light becomes on when connect the camera to the power. The green light flashes and then become on, which means application is running normally. Now you can log in via network.</li></ul>

			<ul style="list-style-type: none"> <li>● The indication light becomes off when you reboot the system via software.</li> <li>● The green light flashes when system is recording.</li> <li>● The red light flashes when system is upgrading.</li> </ul>
WLAN	Wireless network indication light		The wireless network indication light is to display wireless network working status. The network indication light becomes green when you connect the IP camera to the wireless network.
A	RS485 port	I/O port	RS485_A port, control external PTZ
B			RS485_B port, control external PTZ
1	1-2ch alarm input		Alarm input port 1. To receive the signal from the external alarm device.

2			Alarm input port 2. To receive the signal from the external alarm device.
NO	1ch alarm output		Alarm output port. To output alarm signal to the alarm device. NO: Normal open alarm output end. C: Alarm output public end,
C			
RX	Transparent debug serial port		RS232_RX, RS232 receive end.
TX			RS232_TX, RS232 COM send out end.
G	GND		Ground end
RESET	RESET button		Restore factory default setup. When system is running normally (power indication light is green), press the RESET button for at least 5 seconds, system can restore factory default setup.
LEVEL	Auto aperture adjustment button		Adjust aperture level.
AUDIO OUT		Audio output 3.5mm JACK port.	Output audio signal to the device such as

			sound box.
AUDIO IN		Audio input 3.5mm JACK port.	Input audio signal. Receive signals from devices such as pick-up.
LAN		Ethernet port	Connect to standard Ethernet cable.
SD	SD card port		Connect to SD card.

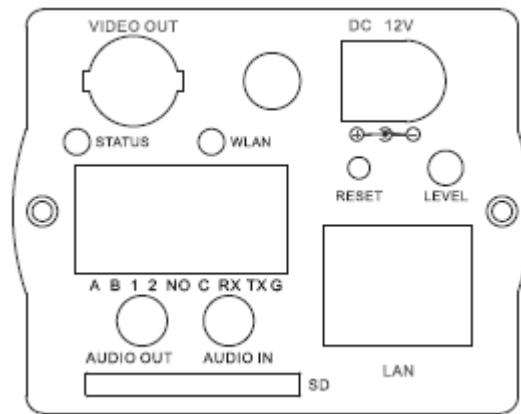
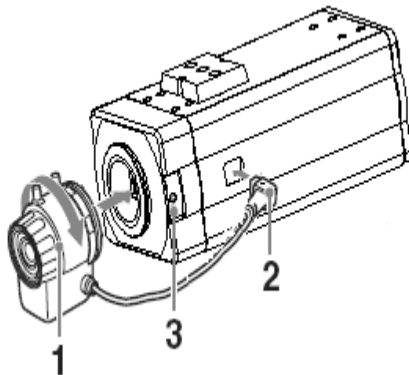


Figure 1-1

## 1.2 Lens Installation

Please refer to the following figure for lens installation information. See Figure 1-2.



- 1** Line up the lens to the installation position and turn it clockwise until it is fixed firmly.
- 2** Insert lens cable plug into auto lens shutter connector. (Go to step 3 directly if you are installing manual lens.)
- 3** You can use slot screwdriver to turn screw to adjust focus if you can not adjust properly when it is  $\infty$ (Infinity).

Figure 1-2

Please note the above lens has CS port. You need to use a 5mm C/CS convertor ring if you are using C type lens.



## 2 Network Installation

IP camera shall be installed in the internet. There are following two conditions. For special use, please contact your local network service provider.

### 2.1 LAN

Please refer to Figure 2-1 for network cable connection.

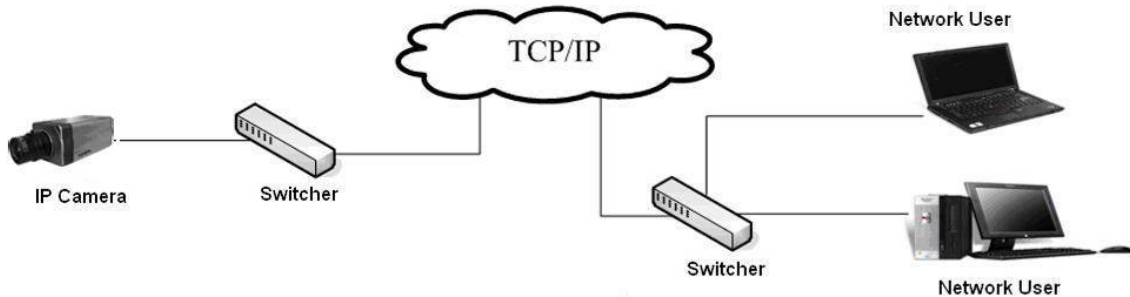


Figure 2-1

### 2.2 Public Network

Please install the IP camera in a LAN. Then use a PC (In the same LAN) to set PPPoE, DDNS, or public IP (Please get corresponding information from your local internet service provider). And then you can set port number as 80 and 37777 in the router. Please refer to Figure 2-2 for cable connection.

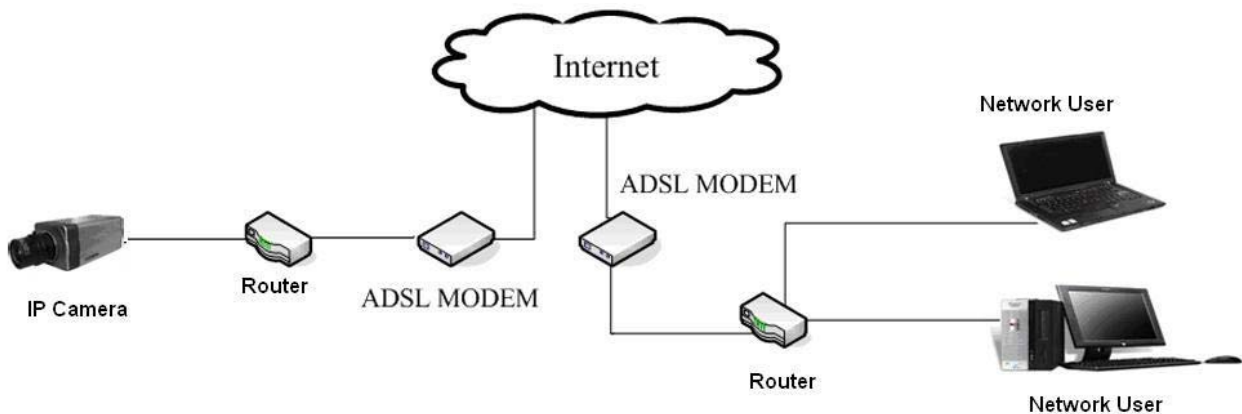



Figure 2-2

**Note:**

- If you want to connect IP camera to the ADSL MODEM, you need to refer to the PPPoE setup section.
- If there is more than one IP camera need to be connected, you need to set different IP addresses for each camera respectively.

### 3 Auto Search IP Tool

Auto search IP tool allows you to search or modify IP camera current IP address.

Open **AutoSearchDevc.exe** (  ), click device list item you can an interface is shown as in Figure 3-1. Here you can view device IP address, port, sub-net mask and gateway information.



No.	IP Address	Port Number	Subnet Mask	Default Gateway	Mac Address
1	10.12.5.25	0	0.0.0.0	0.0.0.0	00:05:da:00:38:26
2	10.12.5.23	0	0.0.0.0	0.0.0.0	00:02:b3:00:40:12
3	10.12.13.66	37777	255.255.0.0	10.12.0.1	00:05:ba:00:80:06
4	10.12.10.7	37777	255.255.0.0	10.12.0.1	00:05:da:00:39:ff
5	10.12.5.27	0	0.0.0.0	0.0.0.0	00:30:48:92:2c:16
6	10.12.5.17	0	0.0.0.0	0.0.0.0	00:05:da:00:42:02
7	10.12.10.4	37777	255.255.0.0	10.12.0.1	52:54:4c:fa:13:be
8	192.168.1.108	37777	255.255.255.0	192.168.1.1	52:54:4c:fa:1f:4e
9	10.12.5.36	37777	255.255.0.0	10.12.0.1	52:54:4c:fb:49:28
10	10.12.13.12	37777	255.255.0.0	10.12.0.1	52:54:4c:fa:27:e9
11	10.12.5.15	0	0.0.0.0	0.0.0.0	00:30:48:95:0c:56
12	10.12.5.34	37777	255.255.0.0	10.12.0.1	52:54:4c:fd:80:a1
13	10.12.13.4	37777	255.255.0.0	10.12.0.1	00:00:22:22:33:55
14	10.12.5.14	0	0.0.0.0	0.0.0.0	00:05:da:00:36:2a

Figure 3-1

In Figure 3-1, double click one IP address you can see a web interface. See Figure 3-2.

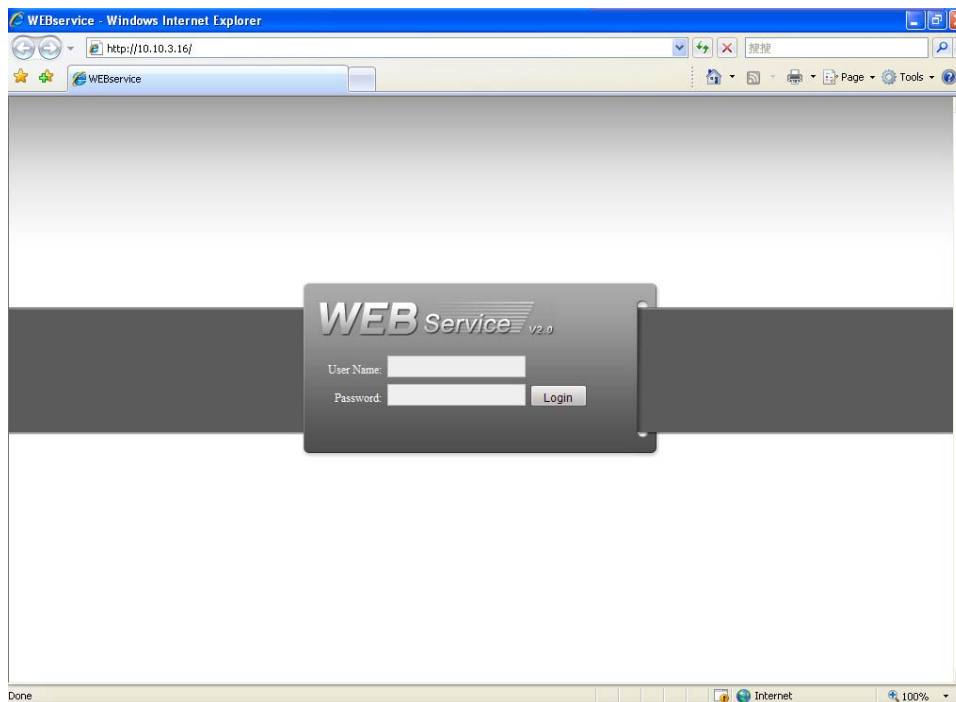


Figure 3-2

In Figure 3-1, select one IP and then click “modify” button, you can see an interface is shown as in Figure 3-3. You can input device user name and address and then log in.

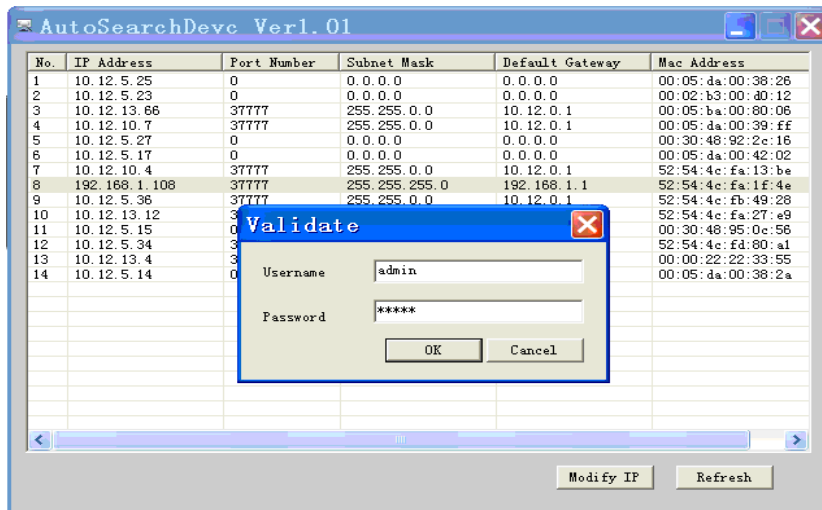


Figure 3-3

After you logged in, you can see an interface is shown as in Figure 3-4. Here you can modify device IP address, sub-net mask and gateway information.

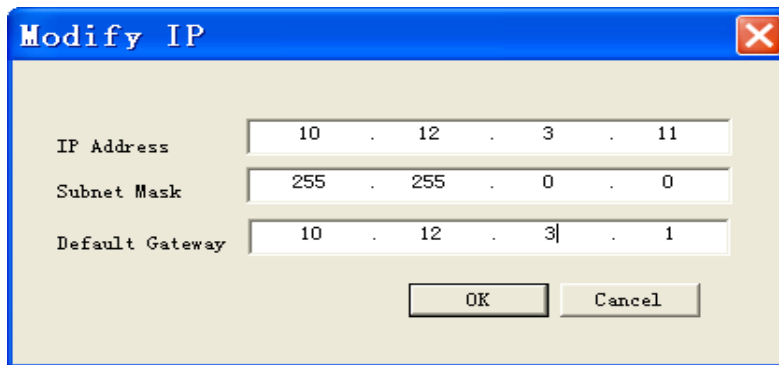


Figure 3-4

## 4 Network Safety Level Setup

You need to modify your IE security setup if you can not install controls properly. Open your IE browser, Tools->Internet Options->Security, select Local Intranet. See Figure 4-1.



Figure 4-1

Click custom level, the interface is shown as below. See Figure 4-2.

Please set as below.

- Set “initialize and script ActiveX controls not marked as safe” as enable or prompt.
- Set “download unsigned ActiveX controls” as enable or prompt.

Click OK to save modification, system pops up warning dialogue box asking you to confirm modification, please click Yes button.



Figure 4-2

Then system goes back to Figure 4-1, click “sites” button, system pops up the following dialogue box. See Figure 4-3.

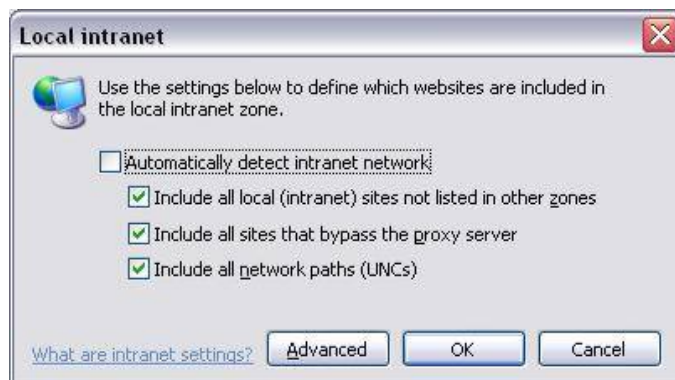


Figure 4-3

Click advanced button, system pops up the following dialogue box. See Figure 4-4. Click add button to add a website to the zone.

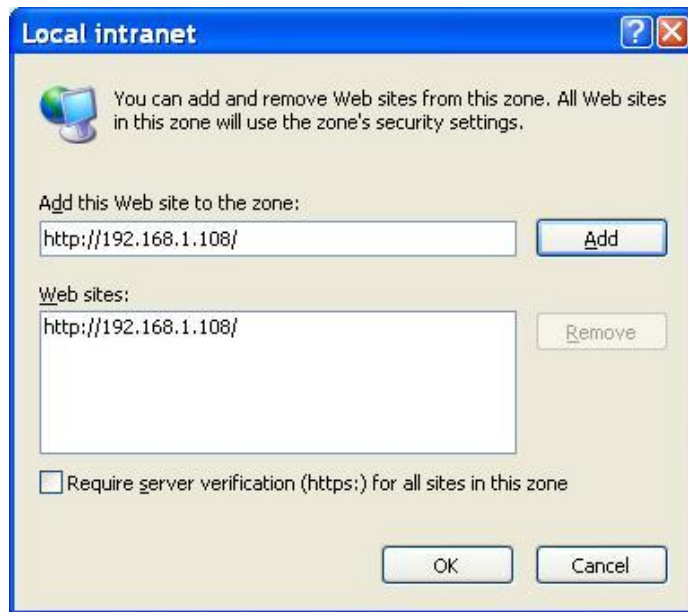


Figure 4-4

## 5 Client Operation

IP camera factory default setup:

- **IP address:** 192.168.1.108.
- **Administrator user name:** admin
- **Administrator password:** admin

### 5.1 Network Connection

Please follow the steps listed below for network connection.

- Connect IP camera to PC via switcher. Now you have established a LAN.
- PC IP address shall be in the same network section. For example:
  - ✧ IP address:192.168.1.XXX
  - ✧ Subnet mask:255.255.255.0
  - ✧ Gateway:192.168.1.1.
- IP camera and PC network setup is right.
- Use order ping **\*\*\*.\*\*\*.\*\*\*.\*\*\***(\* IP camera address) to check connection is OK or not. Usually the return TTL value should be less than 255. Please check network connection if system prompt *requestion time out*. You can use auto search IP tool (chapter 3) to search IP camera IP address.

### 5.2 Login and Logout

Open IE and input IP camera address in the address bar.

For example, if your camera IP is 192.168.1.108, then please input `http://192.168.1.108` in IE address bar. See Figure 5-1.

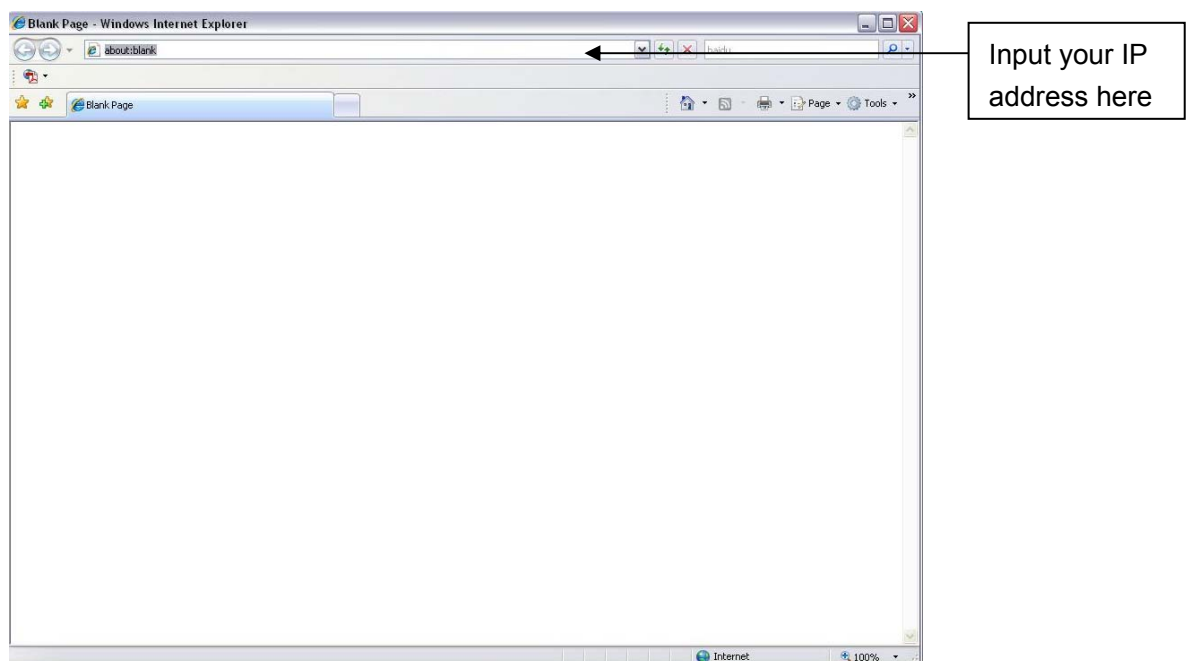


Figure 5-1

System pops up warning information to ask you whether install controls or not. Please click OK button.



If you can't download the ActiveX file, please modify your settings as follows. See Figure 5-2.

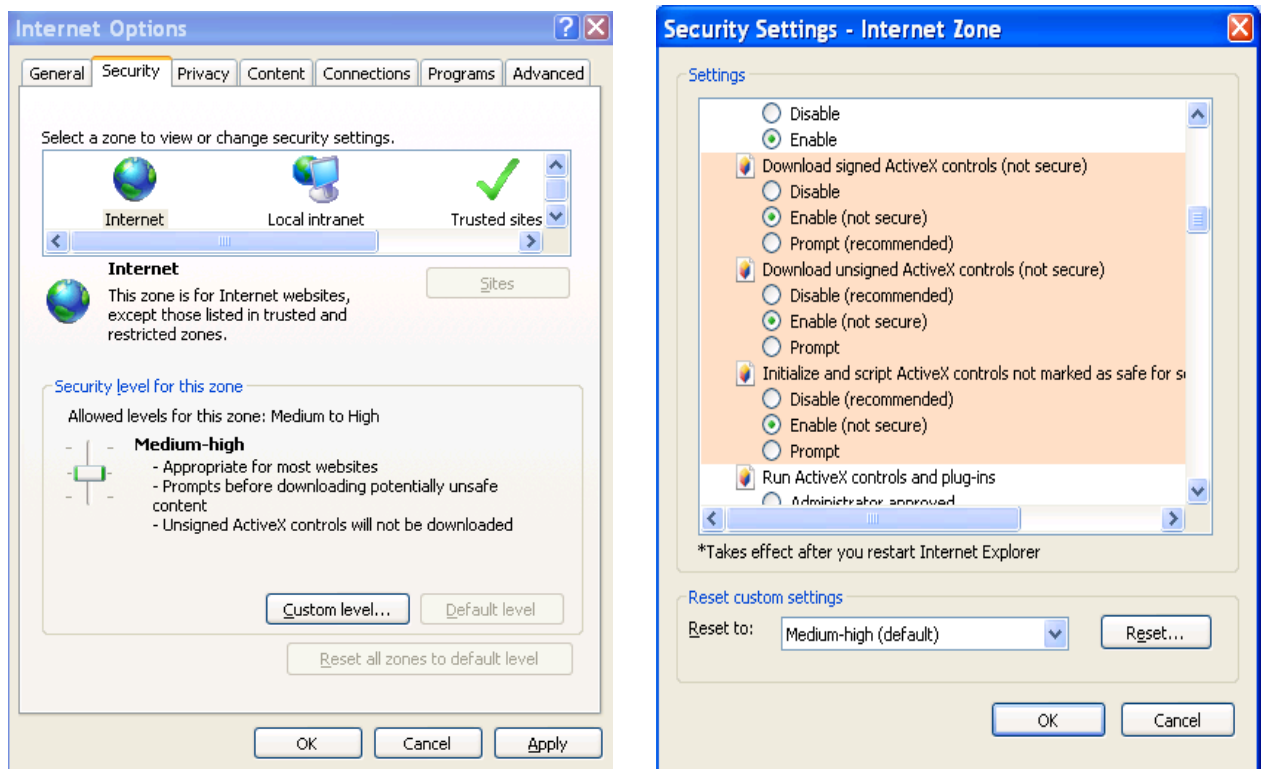


Figure 5-2

After installation, the interface is shown as below. See Figure 5-3.

Please input your user name and password.

Default factory name is admin and password is admin.

Note: For security reasons, please modify your password after you first login.

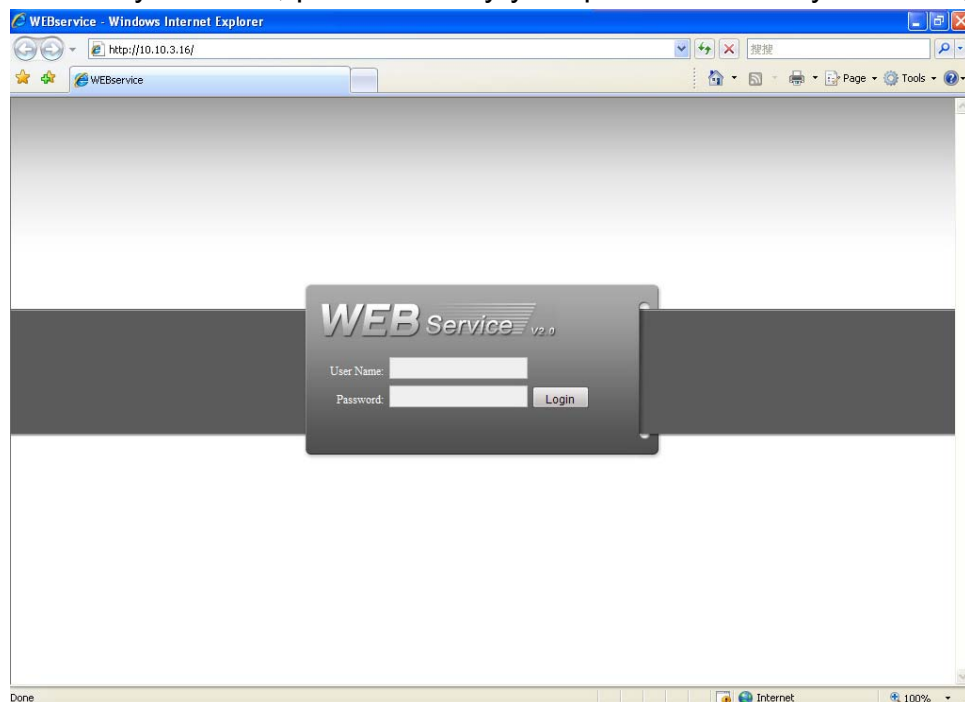


Figure 5-3

After you logged in, you can see the main window. See Figure 5-6.

This main window can be divided into the following sections.

- Section 1: there are five function buttons: configuration, search, alarm, about , log out .
- Section 2: there is a channel number and three function buttons: refresh, start dialog and local play.
- Section3: there are PTZ, color button and you can also select picture path and record path.
- Section 4:real-time monitor window. Please note current preview window is circled by a green rectangle zone.
- Section 5: Here you can view window switch button. You can also select video priority between fluency or real-time.
  - ✧ System monitor window switch supports full screen/1-window/4-window/6-window/8-window/9-window/13-window/16-window/20-window/25-window/36-window. See Figure 5-4.

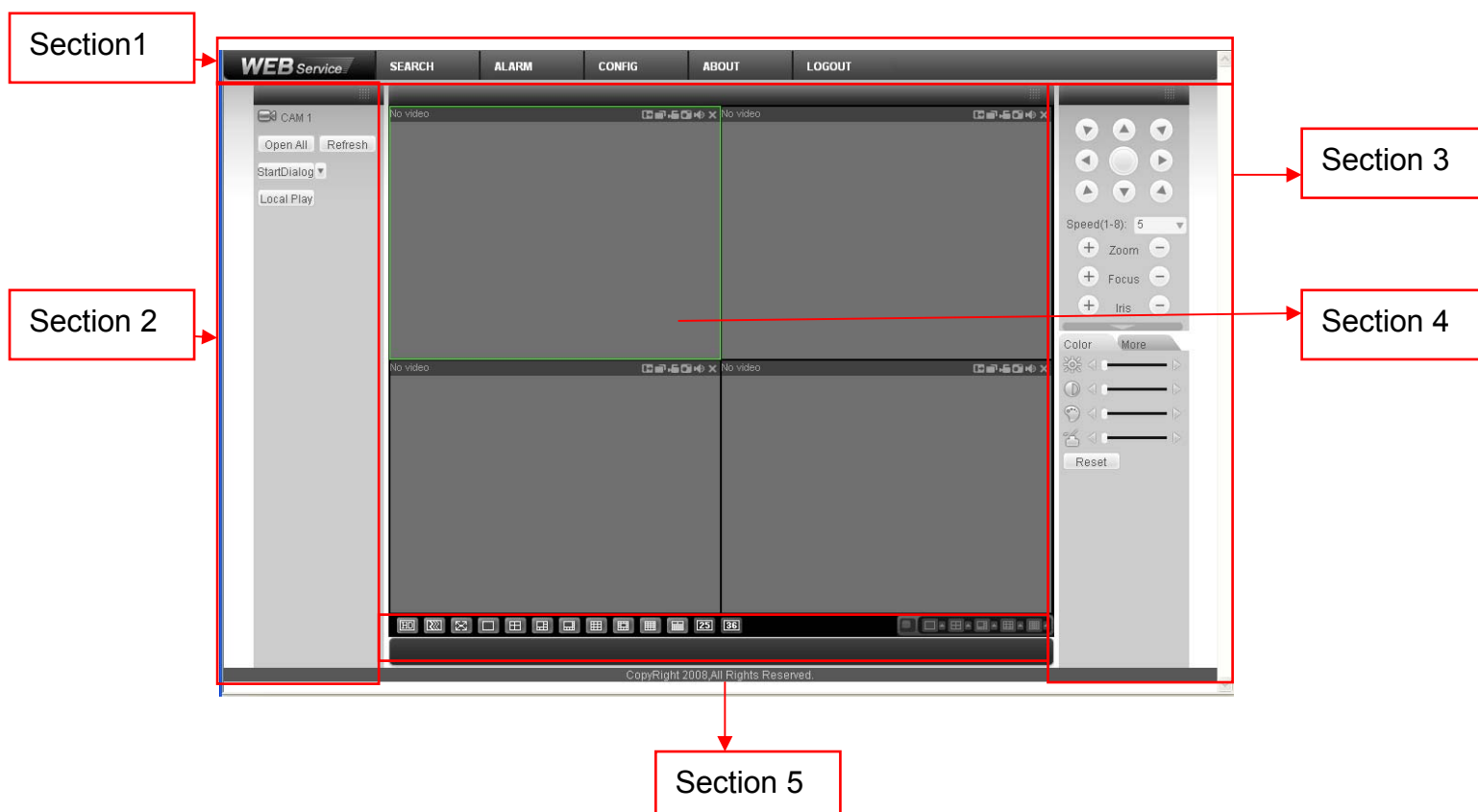


Figure 5-4

- ✧ Preview window switch. System support 1/4/8/9/16-window real-time preview. Please you need to have the proper rights to implement preview operation. You can not preview if you have no right to preview the either channel. See Figure 7-5.



Figure 5-5



## Figure 5-6

**For detailed operation introduction, please refer to our resource CD included in your package for electronic version of the user's manual.**

**Note:**

- Slight difference may be found in user interface.
- All the designs and software here are subject to change without prior written notice.
- Please visit our website for more information.